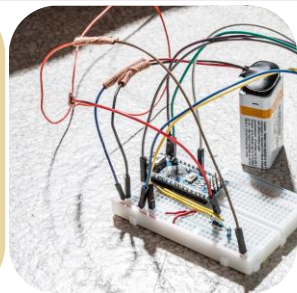
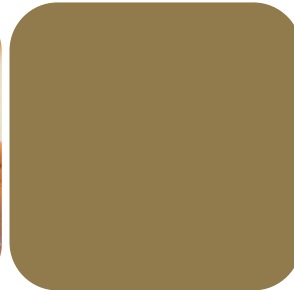


2017-2018

CC@E

ANNUAL REPORT



CAREER CENTER @ ENGINEERING
UNIVERSITY of WASHINGTON

LETTER FROM THE DIRECTOR

Dear Colleagues:

It is getting difficult to imagine what life was like before the “Career Center @ Engineering” (CC@E) existed. Our third year of operation was busy, challenging and very successful, and we wouldn’t want it any other way.

Over the past several years, the local economic environment has been favorable for us. The CC@E’s first career fair, the “Engineering Hiring Expo,” saw 1,200 attendees interact with 41 companies in early October. Feedback from employers on the preparation of our students and the quality of our fair continues to be very positive. We were also happy to welcome Micron as our signature sponsor for both the 2018 Etiquette Dinner & Women’s Breakfast. Engineers are highly sought after to make an immediate impact in companies, and with this summer’s transition to our new career services platform, Handshake, the CC@E staff is working hard to bring internship & full-time employment opportunities to our students.

As the entry-level job market continues to improve, the need for students to emphasize their strengths and experience remains critical. Our team provided a wealth of resources, programming, and personalized services to help our students fulfill their career aspirations. With the new transition to “Direct-to-College” in Fall 2018, strategic moves will position the CC@E to provide enhanced service with improved efficiency, while greatly expanding our opportunities to collaborate with key campus partners to provide effective service from a student’s “Day One” on-campus. The CC@E is also proud to now lead the college-wide oversight of 70 student clubs & organizations, as well as revised student leadership programming through the creation of “Advancing the Next Generation of Leaders in Engineering” (ANGLE) program.

As always, our staff seeks creative ways to help our Engineering students stay ahead & be more competitive in this job market, particularly in non-traditional fields. Thank you for your commitment to UW Engineering students and your partnership along the way. We look forward to our next chapter together!

With gratitude,

Gail Cornelius

Director, Career Center @ Engineering



(from L to R): **Alice Kim** (Career Coach), **Gail Cornelius** (Director), **Shannel Amaraweera** (Career Coach)

2017-2018 EXECUTIVE SUMMARY

8,532

Number of Engineering student interactions
(including walk-ins, appointments, classes at both career centers)



67%

Percent of Engineering students completed at
least one internship before graduating



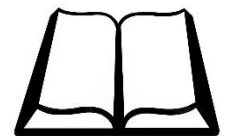
\$73,331

Average entry-level annual salary



516

Number of students enrolled in ENGR 321 / 601



74%

Percent of students staying in Washington state
post-graduation *(for employment or graduate school)*



VALIDATING OUR WORK

The most helpful part is the accessibility of this advice. I was able to access the Webinar from the comfort of my own home, and I was still able to ask questions after the presentation.

-Student

I visited the CC@E as part of an extra-credit class assignment last year and have visited frequently ever since. They have a good selection of candy, and their advice is very valuable.

-Student

Alice provided a very detailed and well-organized presentation; it was very helpful for people just about to start working on their resumes or interview skills.

-Student

You don't run into many career centers that work as well together as the ones at UW. Thanks to the CC@E for getting us in touch with particular student clubs and the other career centers so that we could be efficient on-campus.

-Employer

The CC@E fills a void that we don't get in the classrooms around professional development, so now I'm actually excited for my next steps.

-Student

Gail has been there for me in various ways over the last two years. From getting my first internship at a career fair to negotiating my full-time offer, she gave me great "food for thought" every step of the way.

-Student

Thanks to the CC@E, I feel better equipped to speak with students about what employers are seeking and how to sell what skills one has, not focusing on what s/he doesn't.

-Adviser

I enjoyed the realness of talking to the alumni [at this networking event]. It wasn't like I was trying to impress a recruiter but got to really talk to them and ask questions.

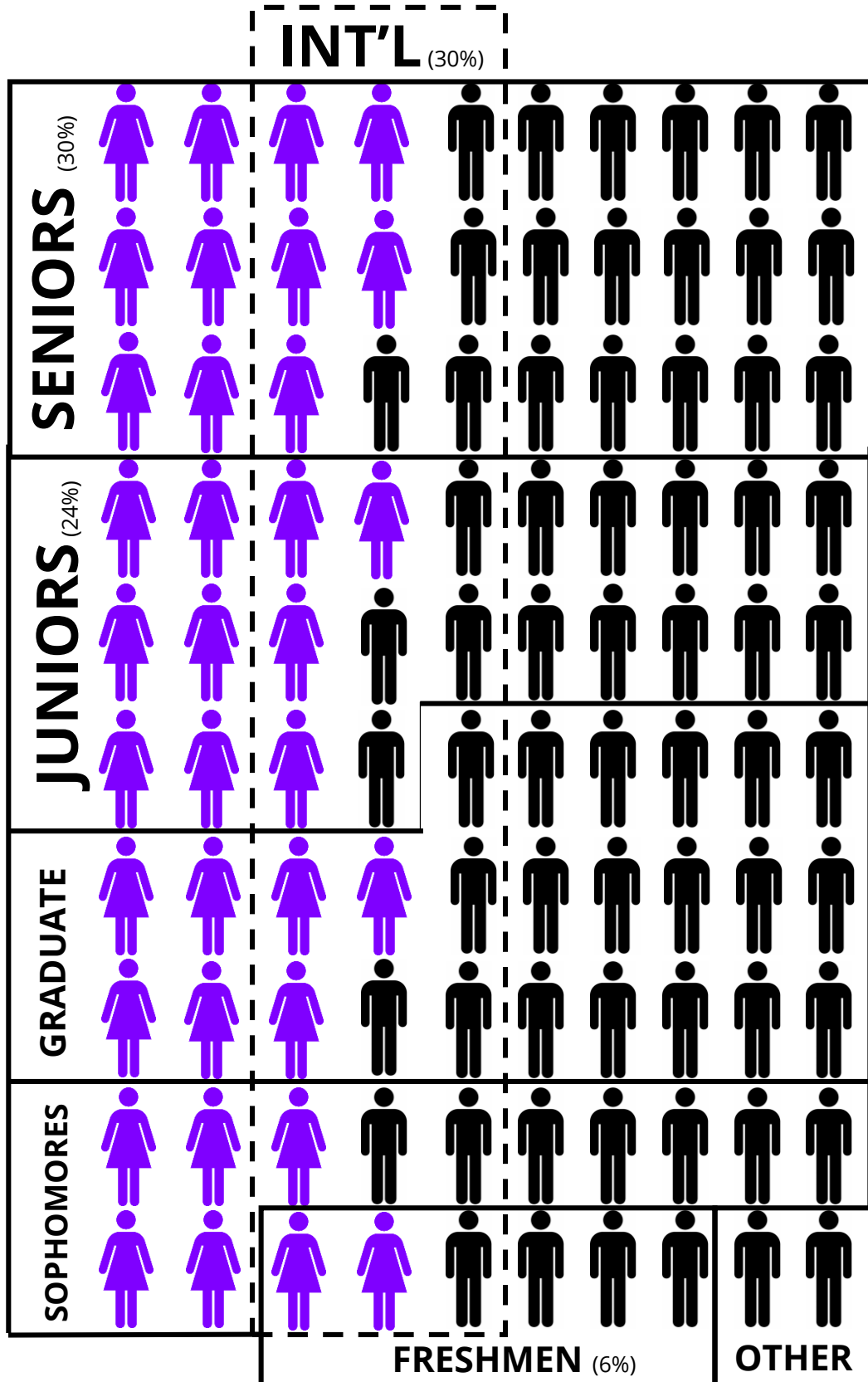
-Student

Gail helped us realize that "major" alone is not the best candidate criteria, so we've gotten some great hires from all across the College.

-Employer

TRAFFIC DEMOGRAPHICS

The infographic below shows the proportion of major populations that utilized the CC@E. 35% of the traffic is female, and seniors continue to be the primary service users, particularly around the Fall recruiting cycle in October.



EMPLOYER ACTIVITY

Below are the **702** companies that were involved with on-campus activities to recruit and/or posted open Engineering positions throughout our online system.

21 Progress
3M
98point6
A1A, Inc.
ABC Legal
Abercrombie & Fitch
Accenture
ACCO Engineered Systems
Accolade
Acumen, LLC
Adobe
ADW | Acosta
Aerojet Rocketdyne
Affirm
Agilysys
AHBL, Inc.
Airbnb
Airgas
Alaska Airlines
Alderwood Water & Wastewater District
Allen Institute for Artificial Intelligence
Allstate
AlphaSights
Altria Group Distribution Company
Amazon
Amazon Go/Amazon Books
Amec Foster Wheeler
American Capital Group
American Family Insurance
AMP Services, LLC
Amplero
Ancestry
Andreessen Horowitz
Antra, Inc
Apple Inc.
Applied Materials
Apptio
AquaAlert
Aquor Water Systems
ArcBest
Architectural Werks, Inc.
Arista Networks
Arup
ASML
ASSAY ABLOY
Associated Earth Sciences
Astronics Corporation
AT&T
AT&T (Retail)
Atelier Drome Architecture + Interior Design
Athlete Intelligence
Atkinson Construction
ATS Automation
Auburn Mechanical
AutoX
Avanade
Avvo
AXA Advisors
Axiom Design Build
Axon
Ballyhoo
Bank of America
Barnhart Crane and Rigging

Barry-Wehmiller Design Group, Inc.
Bassetti Architects
Bayley Construction
BCRA, Inc.
BD
Beacon Hill Staffing Group
BECU
Bellevue Mechanical
Bellwether Housing
BergerABAM
Biotronik, Inc.
Blink UX
Bloodworks NW
Bloomberg
BLRB Architects
Blue Origin
Blueline Group (The)
Bluewolf
BNSF Logistics
Boeing Company (The)
Boise Cascade Distribution
BOMA Seattle King County
Bonneville Power Administration
Boston Consulting Group
Boston Scientific
Bright Horizons Family Solutions
Brighton Jones
Brooksource
Bsquare Corporation
Buckeye International
Budigan Law Firm
Bungie
Bustos Media Holdings



C2 Education
C21/ UW College of Arts & Sciences
CA Technologies/ Automic Software
Cambia Health Solutions
CampusPoint
Cappemini America, Inc.

Capstone Technology Corporation
CareZone Inc
Carlisle Interconnect Technologies
Caron Architecture
Cascadia College
Catholic Charities Serving Central Washington
Catholic Community Services
CBRE
CentiMark Corporation
Central Intelligence Agency (CIA)
Centric Consulting
CenturyLink
CH2M
Checksum, LLC
Chief Architect Software
Childhaven
Cigna
Cisco Systems
City of Redmond
City of Renton
City of Seattle
City Year
Clark | Barnes
Clark Construction Group, LLC
Climate Corporation (The)
Clobotics Corporation
Coffman Engineers, Inc.
Collabera
College Pro
Collins Woerman
Columbia Bank
Columbia Basin College
Columbia Grain, Inc.
Comcast NBCUniversal
Community (The)
Community Care
Companion Care, Inc.
ConsenSys
Consulate General of the Republic of Korea
Convergint Technologies
Convoy
COPE Health Solutions
Cornerstone General Contractors
Corning Incorporated
Costco Travel
Coughlin Porter Lundeen
Coupang
Coyote Logistics
Cozi
CRAY Inc
Crane Aerospace
Creative Motion Control
CRG Events
CrowdStrike
CVPartners
Cypress Semiconductor
D.A. Davidson Companies
D.R. Horton, Inc.
Daimler
David Evans & Associates
Davido Consulting Group
Davita
DBM Contractors, Inc.

DCI Engineers
 Defense Intelligence Agency
 Degenkolb Engineers
 Dell
 Deloitte Consulting LLP
 DESC
 Dignity Memorial
 Direct Energy
 Discuss.io
 Distilled USA Inc
 DLR Group
 DMC, Inc.
 DocuSign
 Domo
 Domtar
 DoosanGridTech
 Dropbox
 Duff & Phelps



E&J Gallo Winery
 Eagle Harbor Technologies
 EagleView
 EAN Holdings- Enterprise Rent-A-Car
 Easterseals Washington
 eBay
 Echodyne Corp
 Educational Opportunity Program (OMA&D)
 Edward Jones Investments
 EF Education First
 Egencia
 Electro Scientific Industries, Inc.
 Electroimpact, Inc.
 Electronic Business Machines
 Eli Lilly and Company
 Emerald City Graphics and Printing Control
 ENERNOC/Demand Energy Networks
 Enterprise Holdings
 EnVia Financial LLC
 Envirocon
 Epic
 Ericsson
 Everett Community College
 Evergreen State College (The)
 Exotic Metals Forming Company
 Expedia Inc
 Expeditors
 Express Employment Professionals
 ExtraHop Networks
 F5 Networks
 Facebook
 FactSet Research Systems Inc.
 Fast Enterprises, LLC
 Fathom

Federal Aviation Administration
 Federal Deposit Insurance Corporation
 FedEx
 Fehr & Peers
 Finity Group, LLC
 Fisher Investments
 Fives DyAG Corp.
 Flatiron
 Fluke Corporation
 FM Global Company
 Fore Architects
 Foresters Financial
 Fraser + Fogle Architects
 Fred Hutchinson Cancer Research Center
 Freenome
 Fresh Consulting
 Futurewei
 GE Digital
 GEICO
 General Dynamics OTS Seattle
 General Electric
 General Electric Healthcare
 Genie
 Gensco Inc
 GeoEngineers, Inc.
 Geosyntec Consultants
 GGLO
 GMMB
 GoDaddy
 Google Inc.
 Gore & Associates Inc.
 Graham Group US LTD
 Granite Construction
 Gray & Osborne, Inc.
 Greater Seattle YMCA
 Green Dot Public Schools, Washington
 Green River College
 Greenpoint Technologies
 Greenroads International
 Grouparchitect
 Habitat for Humanity
 Harder Mechanical Contractors
 Hargis Engineers
 Harriott Valentine Engineers
 Hart Crowser
 Hayward Baker, Inc.
 HBO
 HDR Architecture, Inc.
 HDR Engineering
 Healthcare Management Administrators
 Hensel Phelps Construction
 HERE Technologies
 Heritage Distilling Company
 Hershey Company (The)
 Hertz Corporation
 Hestan Smart Cooking
 Hewitt
 Hexcel Corporation
 Hitachi Consulting
 Hive Battery
 Hiya Inc.
 HNTB Corporation
 Holland American Line
 Homesite
 Homewatch Caregivers
 Honeywell
 Houzz
 Hoyle
 HP Inc
 Huawei

HUITT-ZOLLARS INC.
 Hulu
 Hungryet.com
 ICEBRG
 ID Tech
 Ideal Industries Inc
 IFTTT
 igus Inc.
 Illinois Institute of Technology
 IM Flash
 Imagine Behavioral and Developmental
 Services
 iMatch Technical Services
 Impinj
 Indeed
 Infosys Ltd
 Insight Data Science
 Insight Global
 Institute for Health Metrics and Evaluation
 Instrum
 Instructure
 Intel
 Intellectual Ventures
 International Paper
 Intuitive Surgical
 Jackson | Main Architecture
 James Brinkley
 James Hardie Building Products
 Janicki Industries
 JBT
 Jensen Hughes
 Juno Therapeutics
 JW Architects



K2
 Kaiser Permanente
 Karat
 Katerra
 Kelley Imaging Systems
 Kelly Services Kelly Scientific (TPES)
 KellyMitchell Group
 Kenworth Trucking Company
 Kernel Labs
 KeyBank
 Keyence Corporation of America
 Kiewit
 King County
 King County Department of Natural Resources
 King County DNRP, Human Resources
 King County Metro Transit
 King County Solid Waste Division
 King County Water and Land Resources Division
 Kitsap County
 KONE
 KPFF Consulting Engineers
 KPMG

Landau Associates
 LaunchSquad
 Lawrence Livermore National Lab
 Level 11
 Leviton Network Solutions
 Liberty Mutual
 Limeade
 Limebike
 Loansnap
 LONG Building Technologies
 Low Income Housing Institute
 Lyft
 M87
 MacDonald-Miller Facility Solutions
 Mackay Sposito
 Madrona Venture Group
 Magnusson Klemencic
 Malcolm Drilling Co., Inc.
 Manson Construction Co.
 MAQ Software
 Maxim Integrated
 McKinstry
 Medical Consultants Network
 MemSQL
 MENG Analysis
 MENTOR
 Meraki
 Mercedes-Benz Research & Development North America
 Mercer Island School District
 Mercy Housing Northwest
 Mesosphere
 Micro Systems Engineering, Inc.
 Micron Technology, Inc.
 Microsoft
 Millennium Space Systems
 Miller Hayashi Architects LLC
 moovel NA
 Morrison & Foerster LLP
 Morrison Hershfield
 Motorola Solutions
 Mott MacDonald
 Mu Sigma Inc
 MuleSoft
 Murray Smith, Inc.
 Mu-Sigma
 NASA JPL
 National Geospatial Intelligence Agency
 Naval Air Systems Command
 Naval Research Enterprise Internship Program
 Naver
 Net-Inspect
 New Alchemy
 New Engen
 New Seasons Market
 New York Life Insurance Company
 nfocus Solutions
 Niagara Bottling Company
 Niantic
 Nike, Inc.
 Nintendo
 nLight
 noonum
 North West Company, International Inc. (The)
 Northwestern Mutual
 NOVO Construction
 Novium
 Nth Degree CPAs
 Nutanix
 NVIDIA
 Oath (formerly Yahoo!)
 Odom Corporation (The)

OfferUp
 Office of Congressman Adam Smith (The)
 Office of the Comptroller of the Currency
 Office of the Washington State Auditor
 Oldcastle Precast
 Omni ePartners
 Omnidian
 Omprakash
 Onelin Investment Inc
 Open Window School
 OpenMarket
 Opera Solutions
 Oracle
 Orion Marine Group
 Otak Inc.
 Otis Elevator Company
 Outreach.io



PACCAR / Kenworth Trucks
 PACCAR Technical Center
 PACCAR Parts
 Pacific Capital Resource Group Inc.
 Pacific Northwest National Laboratory
 Pacific Office Automation
 PAE Consulting Engineers/Luma Lighting Design
 Panopto
 Parametric
 Parker Remick, Inc.
 Parker, Smith & Feek
 Parsons
 Partners Group (The)
 Paycom
 Peace Corps
 Pearl Harbor Naval Shipyard
 Pearson Packaging Systems
 PEMCO Mutual Insurance Company
 PepsiCo
 Perkins + Will
 Perteet, Inc.
 PFB Custom Homes Group, LLC
 pH Sciences
 Phillips
 Phillips 66
 Pierce College
 Pineapple Hospitality Company
 Pinterest
 Pitchbook Data
 Pivotal
 Planetary Resources
 Planned Parenthood
 Planon Corporation
 Plugable Technologies
 PNW House Painting
 Point to Point Transportation
 Port of Seattle
 Portland General Electric

Positive Behavior Support Corporation
 POWER Engineers, Inc.
 PPG Architectural Coatings
 Precision Castparts Corp.
 Premera Blue Cross
 Princeton Review
 Promondo, LLC
 PSAV
 Puget Sound Energy
 Puget Sound Naval Shipyard
 Puppert
 Pure Storage
 PwC
 Qadium
 Qualtrics
 Quantcast
 Qumulo
 RAI
 Raymond Handling Concepts
 RealSelf
 Red Dot Corporation
 Redfin
 Reid Middleton Inc.
 Remitly
 Remlinger Farms
 Rental Housing Association of Washington
 resin.io
 RetailMeNot
 Revel Consulting
 Reynolds American, Inc
 Rhino Staging
 Robert Half
 Rockwell Collins
 Rubrik Inc
 Ryan Companies US, Inc.
 SABA
 Safe Crossings Foundation
 Safe N Sound Swimming
 Safran
 Sage Bionetworks
 Saint Gobain
 Salesforce
 Salus Architecture
 Samsung Information Systems America (SISA)
 R&D Center
 Sandis National Laboratories
 SanMar
 Schact Aslani Architects
 Schurman Retail Group- PAPHYRUS
 Seafair
 Sears Holdings Corporation
 Seattle Children's Research Institute
 Seattle City Light
 Seattle Colleges
 Seattle Police Department
 Seattle Safety
 Seattle Sounders FC
 Security Properties Residential
 Seneca Family of Agencies
 Sensoria Inc.
 ServiceNow
 Shaw Industries
 Sherwin Williams Company (The)
 Shift
 Sift Science
 Silicon Valley Bank
 Simerics
 Sinclair Broadcast Group
 Skanska USA Inc
 Slalom Consulting
 Smartsheet
 Snap Raise

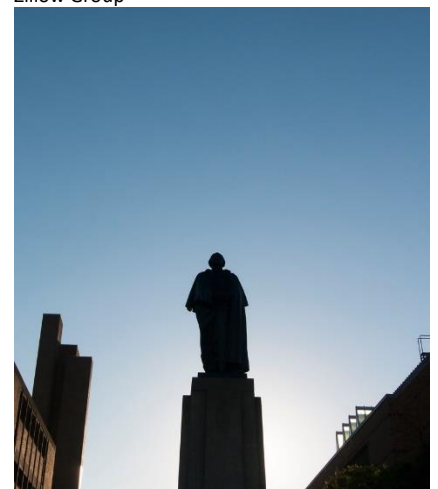
SNC-Lavalin Constructors Inc.
 Snohomish County Public Works
 Snoqualmie Casino
 Social Security Administration
 Solomon Education Center
 Sonoco Products Company
 Sonos
 Soroco
 Sound Transit
 SpaceX
 SPAWAR Systems Center Pacific
 Special Care Agency
 Splunk
 SRG Partnership
 SSC PACIFIC
 SSOE Group
 Stabilitas
 Stackline
 Stacy and Witbeck, Inc.
 Standish Management
 Stantec
 Staples, Inc.
 Starbucks Coffee Company
 Stillwell Hanson Architects & Collaborative
 Construction
 Stratos Genomics
 Stripe
 Stryker Corporation
 Student Conservation Association
 Studio Meng Strazzara
 SugarCRM
 Sunrise Senior Living
 Sunrise Services, Inc.
 SUPERVALU
 Synapse Product Development
 Systems Research, Inc.
 Systima Technologies



T. Howard Foundation
 Tableau
 Tacoma Community College
 Tacoma Power
 Tacoma Water
 Target Corporation
 Tata Consultancy Services
 Taylor Shellfish Farms
 Teach For America
 Techtronic Industries Inc.

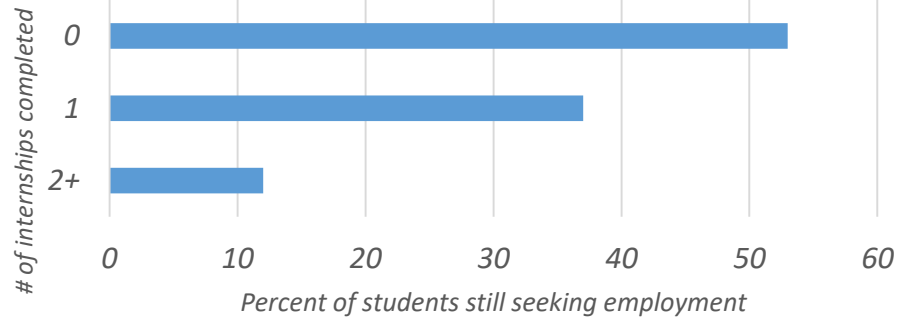
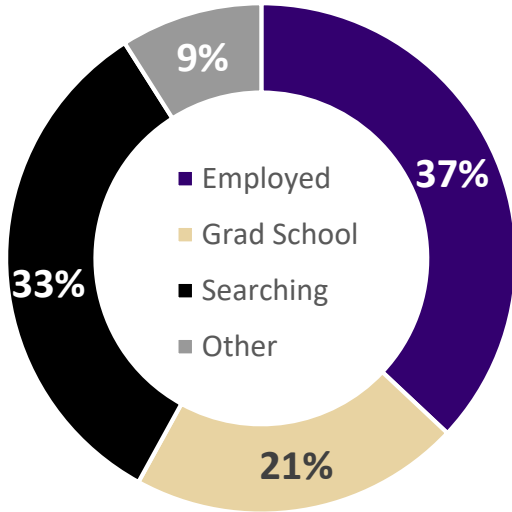
TEEMA Solutions Group
 TEKsystems
 Tektronix, Inc.
 Tempered Networks
 Teradata
 Terex
 Tesla Motors
 TestAmerica Laboratories, Inc.
 Tetra Tech
 Thermo Fisher Scientific
 Thornton Tomasetti
 thyssenkrupp Elevator
 TIBCO Software Inc.
 Tinder
 TireBuyer.com
 T-Mobile
 TransformativeMed
 Transpo Group
 Trillium Employment Services
 Triumph Group
 Turner Construction
 Turner Medical & Research Solutions
 Tyler Technologies
 Uber
 Umpqua Bank
 UNIQLO
 United Rentals
 United Technologies Research Center
 Unity Technologies
 Universal Avionics Systems
 University Mechanical
 Unum
 United Parcel Service
 Urbal Architecture
 Urban Teachers
 US Air Force
 US Army Corps of Engineers
 US Bank
 US Department of State
 US Marine Corps
 US Navy Recruiting
 US Postal Service
 US Secret Service c/o ECU Communications
 UTC Aerospace
 UW Consulting & Business Development Center
 UW Human Resources
 UW Investment Management Company
 UW Master of Science in Information Systems
 UW Medicine
 UW Police Department
 UW SOM Center for Health Equity, Diversity
 and Inclusion
 Uwajimaya Inc
 Vacasa
 Vector Marketing
 Ventec Life Systems
 Verathon Medical
 Verizon
 Versive
 VIA Architecture
 Viasat Inc
 Victory Packaging
 Vimocity
 Visa Inc.
 Visit Seattle
 Vmware
 Voleon Group
 Volta Charging
 Voya Financial Advisors
 Vpgames

Vulcan, Inc.
 WA Health Care Authority
 WA Sate Department of Fish and Wildlife
 WA Sate Health Care Authority
 WA State Attorney General
 WA State Auditors Office
 WA State Department of Corrections
 WA State Department of Early Learning
 WA State Department of Ecology
 WA State Department of Enterprise Services
 WA State Department of Financial Institutions
 WA State Department of Health
 WA State Department of Labor and Industries
 WA State Department of Licensing
 WA State Department of Natural Resources
 WA State Department of Revenue
 WA State Department of Transportation
 WA State Ferries
 WA State Patrol
 Walgreens
 Walker Consultants
 Walmart Labs
 Walt Disney Company (The)
 Washington Policy Center
 Washington State Opportunity Scholarship
 WatchGuard Technologies, inc
 Watershed Company (The)
 WATG Urban
 Wealthfront
 Weber Thompson
 Wedgewood, Inc.
 Wells Fargo Bank
 West Monroe Partners
 Western Washington University
 Weyerhaeuser
 WhitePages
 Whiting-Turner Contracting Company
 Willamette University Early Career and Career
 Channels
 Windermere Real Estate Midtown
 Workday
 World Vision
 Wyndham Vacation Ownership
 Xevo, Inc.
 Xnor.ai
 Yahoo!
 Yakima Valley Farm Workers Clinic
 YMCA of Greater Seattle
 Zetron
 ZGF Architects
 Zillow Group



FIRST DESTINATIONS

This is the third year where the CC@E coordinated an undergraduate “Senior Survey” to understand their post-graduation plans. Over a two-week period, the survey had a **75%** response rate, and Chemical Engineering had the highest voluntary response rate at 98.5%. Consistent with previous years, approximately **74%** of students will stay in Washington state, with the next biggest market being California (10%). The average starting entry-level salary is **\$73,331**, which is an increase of 7% from last year and still tracks above the national average across all industries.



Consistent with last year’s results, experience plays an important piece in entry-level hiring. Of those students who noted that they are “currently seeking” employment one month prior to graduation, 53% have no internship experience while only 12% of those with two or more internships as undergraduates are in the job search.

GRAD SCHOOLS (35 reported)



FIRST DESTINATIONS

COMPANIES (a sampling of the 140 employers reported)



014 LOEW HALL

206-221-8423 | ENGRHIRE@UW.EDU

ENGR.UW.EDU/CAREERCENTER